



ColdStream[®]

Inbound Program

Point-to-Point Automated Cold Chain Visibility

Maintaining good cold chain management throughout the supply chain is critical to ensure the quality of temperature-sensitive goods. When executed properly, the results are obvious: high-quality products, positive brand recognition, and increased profits. Yet these results can be very difficult to accomplish, especially in complex supply chains. And when there are multiple handoffs during the journey, the opportunity for problems increases exponentially.

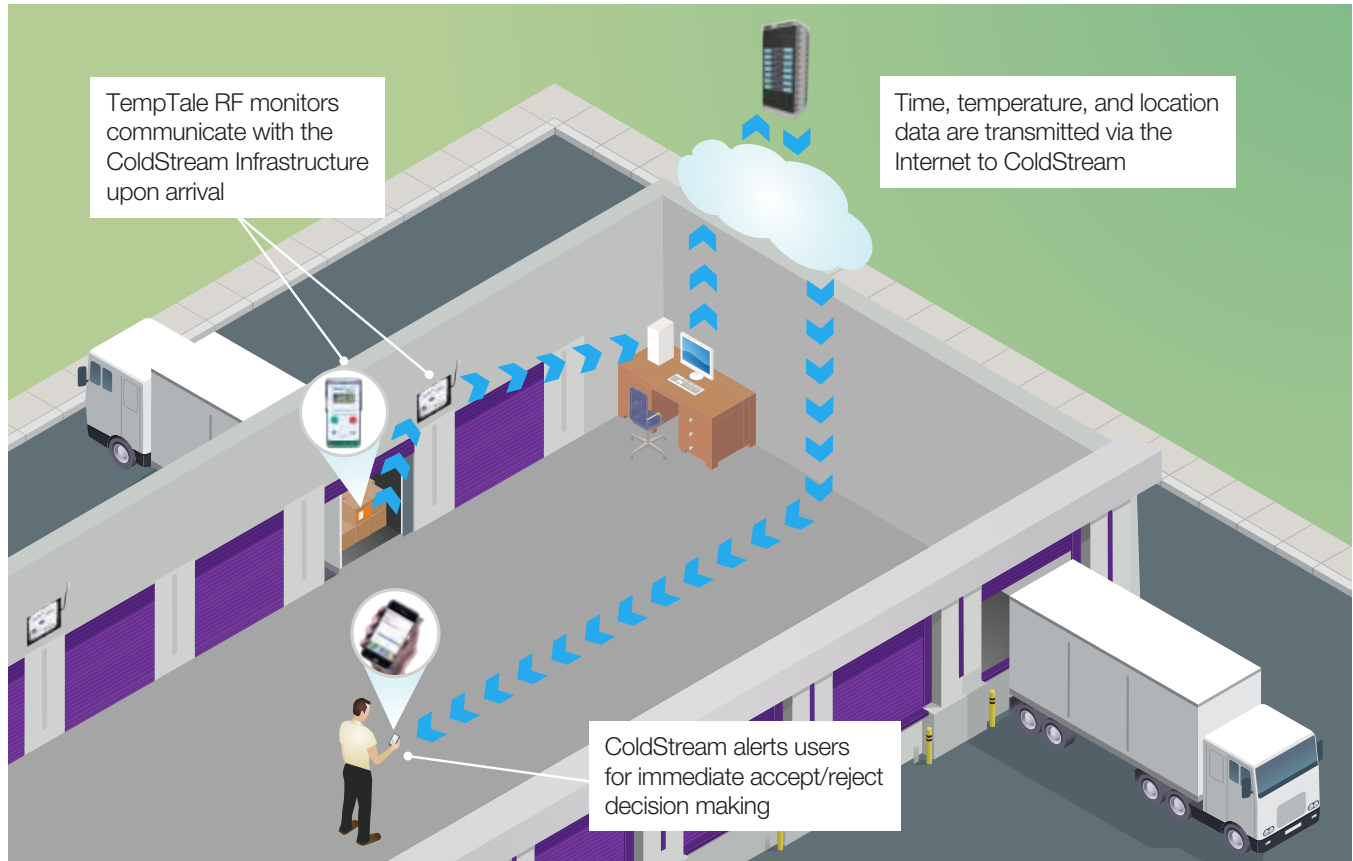
Sensitech's ColdStream[®] Inbound Program uses wireless technology to help solve cold chain problems within complex supply chains. Combining wireless data collection with seamless data management and robust analytical reporting provides receivers with the information they need to identify issues at every handoff throughout the supply chain. Once issues are identified and corrective action is taken, ongoing monitoring and evaluation ensures process consistency. We call it continuous improvement.



ColdStream Inbound Program Features

- Automated, wireless data collection and communication increases operational efficiencies—no monitor retrieval or data conditioning required.
- Validated, hosted data management enables permissions-based access for improved collaboration and a secure, auditable data trail.
- Rules-driven, near-time alerts for increased transaction integrity enables receivers to prioritize issues and focus resources appropriately.
- Robust analytics engine delivers data for in-depth assessments: decision support, program administration, performance evaluation, and continuous process improvement.

How the ColdStream Inbound Program Works



Fully Integrated Components

TempTale® RF (TTRF) temperature monitors are part of Sensitech's family of precision devices designed to track and collect time, temperature and location data about temperature-sensitive shipments. These highly reliable wireless monitors collect and store temperatures for a wide array of in-transit applications. Each TTRF is designed with configurable time and temperature profiles to trigger time-out-of-range alerts.

TTRF monitors store and record location information when other ColdStream RF Infrastructure components are detected. ColdStream RF Infrastructure is installed at receiving sites and transmits data automatically into ColdStream.

ColdStream is a validated, hosted and secure relational database application easily accessible via the Internet for query, reporting and analysis of stored data. ColdStream enables receivers to share critical data efficiently through password protected, selective access—across their own organization or with selected trading partners.

ColdStream Reporting is accessible through the ColdStream Reporting Portal or email subscriptions and is tailored to meet individual needs. Available reports include program administration reports for managing cold chain monitoring compliance, and cold chain performance reports for viewing cold chain performance at a glance (tabular and/or graphically).

As the world's leading provider of cold chain visibility solutions, Sensitech Inc. enables global leaders in the food, pharmaceutical, and industrial markets to track and monitor assets across the supply chain in order to protect the integrity of temperature-sensitive products. Sensitech is an ISO 9001:2008 company based in Beverly, Mass., with offices in Amsterdam, Calgary, Melbourne, Mumbai, Redmond, Santiago, and Shanghai, and additional service and distribution locations around the world. Sensitech is a wholly owned subsidiary of Farmington, Conn.-based Carrier Corp., the world's leader in high technology heating, air-conditioning and refrigeration solutions with operations in 172 countries. Carrier Corp. is a unit of United Technologies Corp. (NYSE:UTX), a Hartford, Conn.-based provider of a broad range of high technology products and support services to the aerospace and building systems industries worldwide. For additional information, please call +1-978-927-7033 or visit www.sensitech.com. © 2011. Sensitech Inc. All Rights Reserved. Unless otherwise indicated, all trademarks and service marks are the property of Sensitech Inc.

A Carrier Corp. Subsidiary

1/11 1500



Amsterdam Boston Calgary Melbourne Mumbai Redmond Santiago Shanghai

Sensitech Inc. • 800 Cummings Center • Suite 258X • Beverly, MA 01915-6197 • 1-800-843-8367 • +1-978-927-7033 • Fax: +1-978-921-2112 • www.sensitech.com