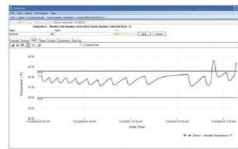


**Millions Depend on the Integrity of Your Product.
Sensitech's Mission is to Ensure that Integrity.**

The Tools That Turn Information Into Power



TempTale Manager®
Desktop Software



Data Management Services



RF Monitoring



TempTale®4 Monitor



TempTale®4 USB Monitor



TagAlert® Indicator

TempTale®4 Dry Ice Probe Monitor Instructions For Use

**For more information, contact our client services
group at 800-843-8367.**



Preparing a TempTale®4 Dry Ice Probe Monitor for Shipment

- Prepare your container for shipment according to your SOP (Standard Operating Procedure) for dry ice pack outs.
- At the point in the SOP where dry ice fills a portion of the box and the product is enclosed, press and release the Green/left Start button on the TempTale®4 Dry Ice Probe Monitor.
- Verify that the “Sunshine” ☀ icon appears in the upper left corner of the display.
- Place the probe of the TempTale4 Dry Ice Monitor as close to your product as possible. (*Re: Keep the monitor’s electronics housing away from the dry ice environment.*)
- Complete the SOP by continuing to add the desired weight of dry ice prior to closing and labeling the shipping container.
- Now your dry ice shipment is ready for shipping.
- If your monitor has been programmed with a Start-up delay the monitor will not begin recording data until the Start-up delay has passed.



Receiving a TempTale4 Dry Ice Probe Monitor

- ***Important:*** Always use protective gloves and caution when removing the PROBE of TempTale4 Dry Ice Monitor from the -80°C dry ice environment. ***DO NOT*** remove the PROBE by pulling on the TempTale4 Dry Ice Monitor.
- When the dry ice shipment arrives, the Receiver should partially remove dry ice from container ***and*** then slowly remove the probe from the dry ice.
- Press the Red/right Stop button to manually stop the unit.¹
- Verify that the stop sign icon 🛑 appears on the LCD panel indicating the TempTale4 Dry Ice monitor has been stopped.^{2, 3, 4}
- Allow monitor and probe cord to warm to room temperature. Wipe probe with a cloth.
- Gently coil the probe, however ***do not*** wrap the probe cord around the monitor.
- ***Remember to always keep the monitor’s electronics housing away from the dry ice environment.***

Notes:

1. *If monitor is not stopped manually, the monitor will continue to run and record time and temperature data until the monitor is downloaded or until the pre-programmed trip length is reached.*
2. *Once the monitor is stopped, pressing the “Start” button will display a summary of the recorded temperature data for the trip in the LCD window.*
3. *After removing the TempTale4 Dry Ice Probe monitor from the container, the monitor can be downloaded immediately if you have TempTale® Manager Desktop installed on your PC.*
4. *Download the TempTale4 Dry Ice Probe monitor to your PC using the Interface Plus Reader by placing the monitor in the Interface plus with the LEDs aligned.*

To mark an important event (“Date Stamp”)

- TempTale4 Dry Ice Probe monitors provide an option to “Date Stamp” or mark an important event at any time during the monitoring cycle that will be visible when viewing the data. The mark is displayed as an arrow when viewing the Graph and shown in italics when viewing Tabular data.
- To mark an event while the monitor is recording, press and release the “Start” button.
- The “arrow” icon ↑ will appear temporarily in the lower left corner and the temperature history will appear on the display. Data appears as follows:
 1. Average temperature
 2. Highest temperature recorded
 3. Total time above high temperature limit
 4. Lowest temperature recorded
 5. Total time below low temperature limit

Alarm

When the TempTale4 Dry Ice Probe monitor is exposed to a temperature outside a pre-programmed limit and time threshold, an “Alarm bell” 🔔 will appear in the lower right corner of the LCD display.

Stopping a TempTale4 Monitor

Press and hold (1 to 3 seconds) the Stop button until the “Stop sign” 🛑 icon appears in the upper right corner of the LCD display.

Displayed Information

