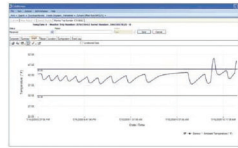


**Millions Depend on the Integrity of Your Product.
Sensitech's Mission is to Ensure that Integrity.**

The Tools That Turn Information Into Power



TempTale Manager®
Desktop Software



Data Management Services



RF Monitoring



TempTale®4 Monitor



TempTale®4 USB Monitor



TagAlert® Indicator

TempTale®4 Probeless Dry Ice Monitor Instructions For Use

**For more information, contact our client services
group at 800-843-8367.**



Preparing a TempTale®4 Probeless Dry Ice Monitor for Shipment

- Prepare your container for shipment according to your SOP (Standard Operating Procedure) for dry ice pack outs.
- At the point in the SOP where dry ice fills a portion of the box and the product is enclosed, press and release the Green/left Start button on the TempTale4 Probeless Dry Ice Monitor.
- Verify that the “Sunshine”☀️ icon appears in the upper left corner of the display.
- Place the TempTale4 Probeless Dry Ice Monitor as close to your product as possible.
- Complete the SOP by continuing to add the desired weight of dry ice prior to closing and labeling the shipping container.
- Now your dry ice shipment is ready for shipping.
- If your monitor has been programmed with a Start-up delay the monitor will not begin recording data until the Start-up delay has passed.



Receiving a TempTale 4 Probeless Dry Ice Monitor

- **Important:** Always use protective gloves and caution when removing the TempTale4 Probeless Dry Ice monitor from the -80°C dry ice environment.
- When the dry ice shipment arrives, the Receiver should remove the TempTale4 Probeless Dry Ice monitor and press the Red/right Stop button to manually stop the unit.¹
- Verify that the stop sign icon appears on the LCD panel indicating the TempTale4 Dry Ice monitor has been stopped.^{2, 3, 4}

Notes:

1. If monitor is not stopped manually, the monitor will continue to run and record time and temperature data until the monitor is downloaded or until the pre-programmed trip length is reached.
2. The **LCD** of the TempTale4 Probeless Dry Ice monitor **requires a ‘warm-up’ period of up to 5 minutes at room temperature to display summary data and icons after exposure to extremely low temperatures.**
3. After removing the TempTale4 Probeless Dry Ice monitor from the container, the monitor can be downloaded to your PC immediately if you have TempTale Manager® 2.4 or TempTale Manager Desktop installed on your PC.
 - a) If you are running TempTale Manager 2.4, the Monitor Type displayed in Graph, Summary and Tabular Views is Ambient instead of TempTale4: Dry Ice.
 - b) If you are running TempTale Manager Desktop, the Monitor Type displayed in Graph, Summary and Tabular Views is TempTale4: Dry Ice.
4. Download the TempTale4 Probeless Dry Ice monitor to your PC using the Interface Plus Reader by placing the monitor in the Interface plus with the LEDs aligned.

To mark an important event (“Date Stamp”)

- TempTale4 Probeless Dry Ice monitors provide an option to “Date Stamp” or mark an important event at any time during the monitoring cycle that will be visible when viewing the data. The mark is displayed as an arrow when viewing the Graph and shown in italics when viewing Tabular data.
- To mark an event while the monitor is recording, press and release the “Start” button.
- The “arrow” icon will appear temporarily in the lower left corner and the temperature history will appear on the display. Data appears as follows:
 1. Average temperature
 2. Highest temperature recorded
 3. Total time above high temperature limit
 4. Lowest temperature recorded
 5. Total time below low temperature limit

Alarm

When the TempTale4 Probeless Dry Ice monitor is exposed to a temperature outside a pre-programmed limit and time threshold, an “Alarm bell” 🔔 will appear in the lower right corner of the LCD display.

Stopping a TempTale4 Monitor

Press and hold (1 to 3 seconds) the Stop button until the “Stop sign” 🛑 icon appears in the upper right corner of the LCD display.

Displayed Information

