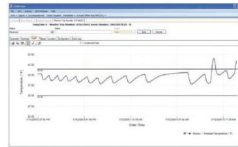


**Millions Depend on the Integrity of Your Product.
Sensitech's Mission is to Ensure that Integrity.**

The Tools That Turn Information Into Power



TempTale Manager®
Desktop Software



Data Management Services



RF Monitoring



TempTale®4 Monitor



TempTale®4 USB Monitor



TagAlert® Indicator

TempTale®4 USB Monitor Instructions For Use

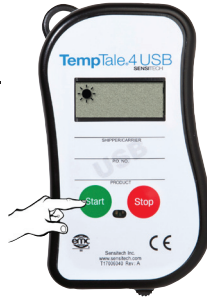
**For more information, contact our client services
group at 800-843-8367.**



All TempTale[®]4 USB monitors are programmed with a custom start-up delay, measurement interval and time-temperature alarm settings.

Starting a TempTale[®]4 USB Monitor

- Press the Start button (1 – 3 seconds) until the “Sun” start icon ☀ appears in the upper left corner of the display.
- The TempTale4 USB will now begin to record data after the pre-programmed start-up delay period has passed.



Marking an important event (“Date Stamp”)

- The TempTale4 USB monitors provide an option to “Date Stamp” or mark an important event at any time during the monitoring cycle. This mark will be visible as an arrow on the time-temperature graph and in *italics* when viewing the tabular data.
- To mark the data while the monitor is recording, press and release the “Start” button. The “Arrow” ↑ icon will appear temporarily in the lower left corner and the temperature history information will appear on the display in the following order:
 1. Average temperature
 2. Highest temperature recorded
 3. Total time above high temperature limit
 4. Lowest temperature recorded
 5. Total time below low temperature limit

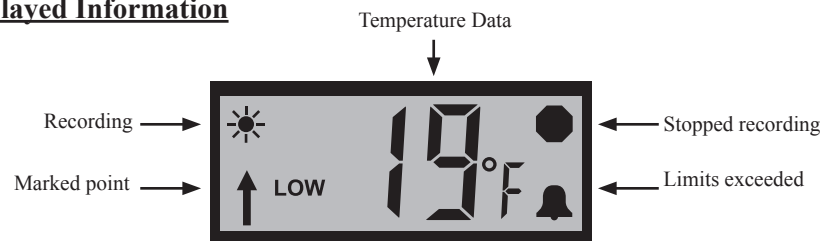
Alarming

When the TempTale4 USB is exposed to a temperature outside a pre-programmed time and temperature limit threshold, an “Alarm Bell” icon 🔔 will appear in the lower right corner of the display.

Stopping a TempTale4 Monitor

Press and hold (1 to 3 seconds) the Stop button until the “Stop” icon ● appears in the upper right corner of the display. Inserting the USB plug into a USB port on the computer will also stop the monitor.

Displayed Information

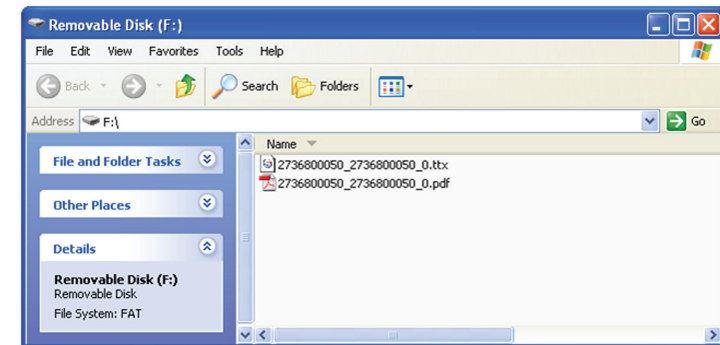


Receiving a TempTale4 USB Monitor

- Recover the TempTale4 USB monitor and press the red stop button (1 – 3 seconds) to manually stop the unit. NOTE: If the monitor is not stopped manually, the TempTale4 USB will continue to record data until the monitor is plugged into a USB port on the computer or until the pre-programmed trip length is exceeded.
- Verify the “Stop” icon ● is visible on the display

Retrieving TempTale4 USB Monitor reports and data files

- Pull out the USB connector cable from the side of the TempTale4 USB monitor and insert the plug into a USB port on the computer. The monitor will automatically begin creating the Adobe[®] PDF report and Sensitech .ttx data file within the monitor.
- After the LED on the face of the monitor glows solid green, the monitor has completed the report and data file generation. The files are now accessible as files on a “removable drive” as shown below. (Windows XP and Vista).
Note: Do not remove the plug from the USB port on the computer until the LED on the face of the unit glows solid green.



Managing and Viewing TempTale4 USB Monitor Files

- If the computer has Adobe PDF compatible reader software installed, the PDF report file containing the monitor information, summary statistics, and time-temperature data graph, can be opened and viewed by double clicking on the .pdf file icon.
- If the computer has Sensitech’s TempTale Manager[®] Desktop Software installed, the .ttx data file containing the monitor information and time-temperature data, can be opened and accessed by double clicking on the .ttx file icon.
- Both the PDF and .ttx files can be moved, copied, saved and/or attached to email as allowed by the computer operating system.