



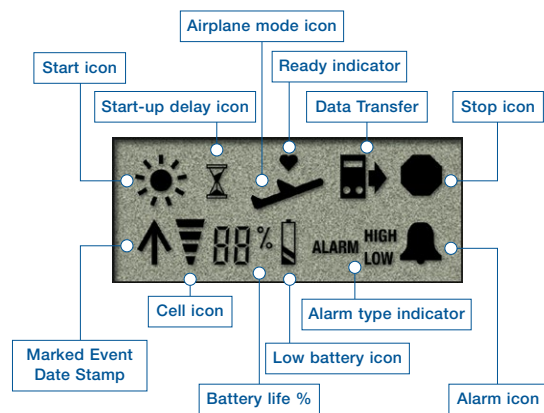
# TempTale® GEO

## Real-Time Visibility for Temperature & Location

Visibility—the relative ability to be seen under given conditions of distance, light, atmosphere, etc.—is now a competitive advantage in today’s complex supply chains. “Where is my cargo? And, what is its condition?” Regardless of where you sit—supplier, receiver or transportation provider—visibility is now a must have for logistics efficiency and quality assurance. TempTale® GEO delivers that competitive advantage, at an easy-to-implement and affordable cost.

### TempTale® GEO Features and Benefits

- Provides real-time visibility for temperature and location to support both logistics and quality.
- Gives advance indication to all supply-chain partners where product is located and when it will arrive.
- Reduces risk by enabling active intervention to address correctable temperature deviations before they impact product quality.
- Allows data to be viewed in real time through a self-serve user interface—SensiWatch™ Tracks.
- Manages data in the same private and secure web hosted environment as other TempTale® units, which facilitates a view of the entire perishable supply chain to drive sustainable improvements and compliance.
- Provides PDF reports and allows alternate data download into a secure database via USB.
- Ensures that no data gaps occur when the device travels through areas with no cellular coverage.



Intuitive LCD and LED indicators provide device status and alarm notification



TempTale® Geo Specifications				
<b>Sensor Types</b>	Temperature, Light			
<b>Temperature Range for Storage</b>	-20°C to 55°C (-4°F to 131°F)			
<b>Temperature Measurement Range</b>	-15°C to 55°C (5°F to 131°F)			
<b>Environmental Rating</b>	IP64			
<b>Temperature Accuracy Range</b>	NIST® traceable:			
	<b>Celsius</b>		<b>Fahrenheit</b>	
	<b>Range</b>	<b>Accuracy</b>	<b>Range</b>	<b>Accuracy</b>
	-15°C to -10°C	±1°C	5°F to 14°F	±1.8°F
	-10°C to 45°C	±0.5°C	14°F to 113°F	±0.9°F
	45°C to 55°C	±1°C	113°F to 131°F	±1.8°F
<b>Temperature Resolution</b>	0.1°C/F over full temperature measurement range			
<b>Light Sensor</b>	1-400 lux			
<b>Temperature Measurement Responsiveness</b>	Meets the requirements of USP 1118 and EN12830			
<b>Cellular Communications</b>	Global Quad-band GSM (850, 900, 1800, 1900 MHz), GPRS data			
<b>Location Method</b>	Cellular-based location			
<b>Data Logger Memory Type</b>	8k data points, Non-volatile EEPROM			
<b>Programmable Data Logger Alarms</b>	Maximum of 6 alarms using any combination of 4 alarm types			
<b>Data Logger Alarm Types</b>	High/low temperature limit; Single Temperature range; Dual Temperature range; Time-only			
<b>Cold Chain PDF report</b>	Internally generated and stored PDF report; can be downloaded/printed using USB port			
<b>Battery Life/Type</b>	High Capacity Internal Lithium Battery			
	<ul style="list-style-type: none"> <li>• Shelf Life: 67 days; Operating: Minimum 7 days (15 minute reporting interval)</li> <li>• Shelf Life: 67 days; Operating: Minimum 14 days (30 minute reporting interval)</li> <li>• Longer intervals allow greater operating life up to 60 days</li> </ul>			
<b>Temperature Sensor Sampling Interval</b>	15 minutes to 2 hours, factory configurable			
<b>Data Reporting Interval</b>	15 minutes to 8 hours, factory configurable			
<b>Operating Modes</b>	Standard Run mode; Delayed Start Run mode; Airplane mode; Ocean Container mode			
<b>Housing</b>	UL 94-V0 flame retardant plastic, IP64			
<b>Mechanical, Shock &amp; Vibration</b>	3000 lb (1360 kg) crush resistant			
<b>Dimensions</b>	3.25 in. x 6.25 in. x 1 in. (82 mm x 165 mm x 25 mm)			
<b>Weight</b>	0.75 lb (0.34 kg)			
<b>Certifications</b>	FCC, CE, RoHS, PTCRB, WEEE, DO160G, EN61000-4-2 Level 4, IEC62133, UN-38.3, EN61000-6-3, EN61000-6-1, EN60950-1; Incidental food contact per U.S. FDA 21 CFR Part 181.32			
<b>Validation</b>	Designed and manufactured to comply with 21 CFR part 11 and EU GDP			
<b>Device Interface</b>	Status LEDs; LCD; Push buttons; USB			
<b>Real-Time Software Interface</b>	SensiWatch™ Tracks Real-Time web-based application			
	<ul style="list-style-type: none"> <li>• Shipment creation</li> <li>• Trip Information including departure and arrival times, origin and destination locations, carrier, PO, product type</li> <li>• Temperature alarms</li> <li>• Temperature statistics and history graph</li> <li>• Location information and history</li> <li>• Reports</li> </ul>			
	Email alarm notifications			
<b>Compatible Software</b>	TempTale Manager® Desktop (TTMD); ColdStream® Cold Chain Manager			

## SensiWatch™ Tracks— Designed for Supply Chain Efficiency

Visibility begins when the shipment begins—the more information collected up-front about the shipment, the better the analysis will be at the conclusion of the shipment. This is an important fact for all parties involved—shippers, receivers, and logistics providers.

## SensiWatch™ Tracks Features and Benefits

- View data in multiple ways to best suit your business needs:
  - Individual Trip Detail featuring shipment details, statistics, alarms, and a temperature graph.
  - Map View showing the location of in-transit devices with mouse-over capabilities for detail.
  - Directory View highlighting shipment attributes with status in a tabular format.
- Configurable condition status automatically triggers email notifications.

- Develop alarm configurations easily within SensiWatch™ Tracks: sensor excursion, departure/arrival, not moving, not transmitting, predicted late arrival; support for multiple alarm definitions per trip.
- Supports hassle-free software upgrades through a browser-based interface.
- Customized reports configurable by user:
  - Filter and group by product, origin, destination, carrier, date range.
  - View many trips in aggregate or drill down to single trip detail.
  - Compare temperature statistics among groups.
  - Rank performance by top ten key performance indicators (KPI).
  - Monitor changes in KPIs over time to spot trends.
  - Compare multiple temperature graphs.
  - Determine appropriate alarm sensitivity to avoid “alert fatigue.”

### Map View

Overview of all in-transit shipments and their current status for the past seven days, updated in real time as new data is collected.

- Zoom in/out for ideal viewing.
- Filter view by product, origin, destination, alarm status.
- Click on any shipment to view trip details.
- Flag trips for reference.

**What to measure?**  
Product, origin, destination, transport type, carrier, commodity.  
Real-time visibility tells a transparent story.

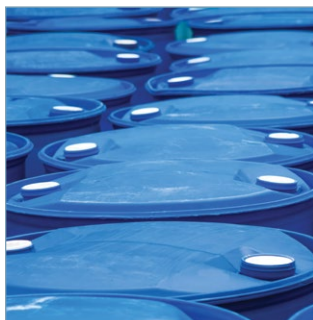
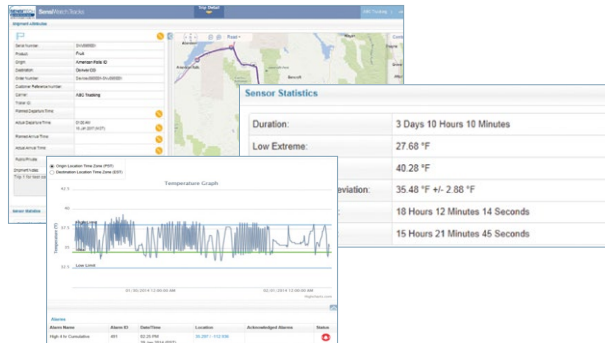
### Directory View

View shipment details in an easy-to-read tabular format. Filters applied in either Map View or Directory View are automatically populated to the other for consistency.

Trip Status	Monitor Status	Serial Number	Product	Origin	Destination	Order Number	Carrier	Actual/Departure Time	Planned Arrival Date	Actual Arrival Date	Actions
No Device	Not Activated	SN0287001	Phoenix AZ	Phoenix AZ	Denver WA	CS	ABC Trucking				
No Device	Not Activated	SN0287002	Leffell	Phoenix AZ	Fort Myers Beach FL	SN0287002	Arma Transport				
No Device	Not Activated	SN0287003	Leffell	Phoenix AZ	Aurora AR	SN	ABC Trucking		28 Jun 2017 08:00		
No Device	Not Activated	SN0287004	Bladenboro	San Diego WA	Seattle WA	SN	TruckCo		14 Jun 2017 08:00		
In Transit	OK	SN0287005	Fruit	American Falls ID	Denver CO	SN0287005-SN0287005	ABC Trucking	01:00 AM	14 Jun 2017 08:00	14 Jun 2017 08:00	
In Transit	OK	SN0287006	Apples	American Falls ID	Denver CO	SN0287006-SN0287006	TruckCo	11:00 PM	14 Jun 2017 08:00	14 Jun 2017 08:00	
In Transit	OK	SN0287007	Raspberries	Amesbury TX	Rockaway NY	SN0287007-SN0287007	ABC Trucking	11:00 PM	20 Dec 2014 02:00	20 Dec 2014 02:00	
In Transit	OK	SN0287008	Apples	American Falls ID	Denver CO	SN0287008-SN0287008	Arma Transport	08:00 AM	14 Jun 2017 08:00	14 Jun 2017 08:00	
No Device	Not Activated	SN0287009	Apples	American Falls ID	Denver CO	R0287009_L	TruckCo				
No Device	Not Activated	SN0287010	Apples	American Falls ID	Denver CO	R0287010_L	TruckCo				
Active	OK	SN0270001	Apples	Spokane Valley WA	Seattle WA	SN0270001	Arma Transport	01:00 AM	21 Jun 2017 08:00	21 Jun 2017 08:00	
Active	OK	SN0270002	Apples	Spokane Valley WA	Seattle WA	SN0270002	ABC Trucking	09:00 AM			

## Trip Detail Screen

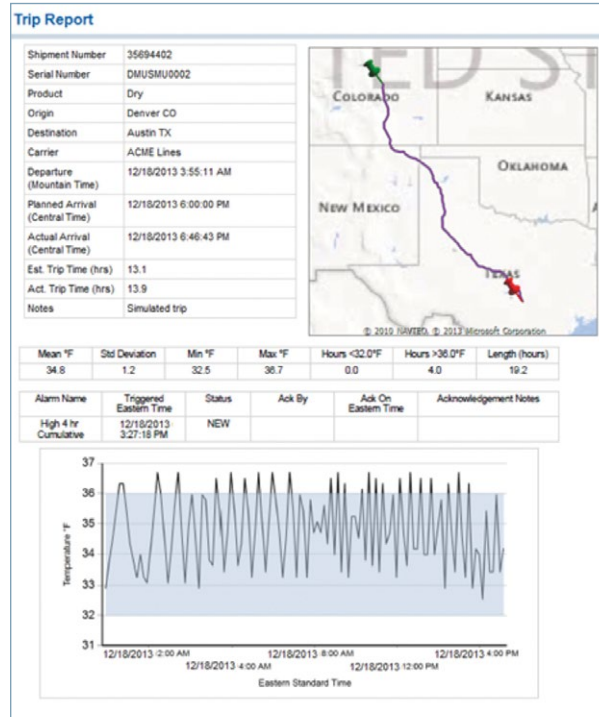
Provides complete detail on shipment attributes, sensor statistics, temperature information graph, and alarm notifications.



## Email Notifications

Subject line identifies shipment number and status (departed, late, sensor excursion, arrived) for quick information updates.

Email notification includes complete trip detail including shipment attributes and status information.



Sensitech Inc. is focused on delivering supply chain visibility solutions that track, monitor and protect products for global leaders in the food, life sciences, consumer goods, and industrial markets. Our solutions are focused in three key areas: quality and compliance, supply chain security, and logistics performance management. Quality and compliance solutions address temperature-sensitive, complex supply chains focused on delivering the highest quality possible, while our supply chain security solutions help to mitigate risks associated with theft, diversion and chain of custody. Sensitech's logistics performance solutions deliver origin-to-destination, real-time transparency to any in-transit journey. Sensitech Inc. is an ISO 9001:2008 company, headquartered in Beverly, Mass., with more than 35 sales, service and distribution locations around the world. Sensitech is a part of UTC Climate, Controls & Security, a unit of United Technologies Corp., a leading provider to the aerospace and building systems industries worldwide. Visit [www.sensitech.com](http://www.sensitech.com) for additional information. © 2017 Sensitech Inc. All Rights Reserved. Unless otherwise indicated, all trademarks and service marks are the property of Sensitech Inc. NIST is a registered trademark of The National Institute of Standards and Technology Agency of the United States Government.