



VizComm™ View

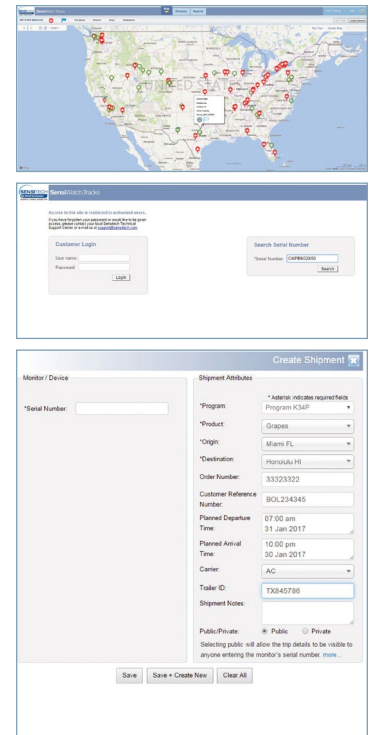
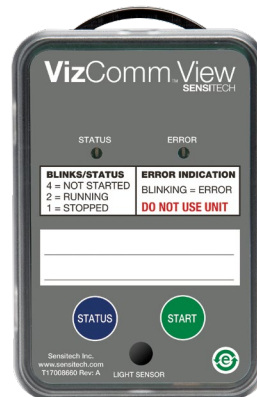
Real-Time Covert Tracking for Supply Chain Visibility

Comprehensive real-time tracking is now available without the hassle of complex deployment. The VizComm™ View tracker is efficient in performance and easy to implement. This robust tracker delivers rich visibility into every link of the supply chain. Real-time alerting enables proactive responses to cargo delays and in-transit disruptions, thereby reducing business risks and driving logistics efficiency.

The single-use VizComm View tracker is a battery-powered, cost-effective solution for tracking every shipment for security and logistics performance purposes. Avoid disruptions caused by careless handoffs and transfers in real-time globally. And with Sensitech's global reach and comprehensive cellular performance, the VizComm View tracker supports cross-border solutions that enable messaging in areas with impaired communication services.

Key Features and Benefits

- Arrives fully configured and charged, with push-button start for **easy deployment**
- **Real-time location tracking** to support both logistics and security
- Global communication coverage helps to assure feedback **anywhere in the world**
- **Light sensor** for evidence of box or door opening
- **Reduced footprint** makes it easy to place and conceal
- Automated **alerts** based on real-time location and sensor data
- No-worry returns; **recycling** encouraged and supported
- Works in conjunction with SensiWatch™ Tracks, a secure, **web-based tracking** and monitoring platform



VizComm® View Tracker Specifications	
Sensor Types	Temperature, Light
Temperature Range for Storage	-20°C to 55°C (-4°F to 131°F)
Temperature Measurement Range	-18°C to 55°C (-0.4F to +131F)
Environmental Rating	IP64
Light Sensor Sensitivity	0-400 lux
Cellular Communications	Global Quad-band GSM (850, 900, 1800, 1900 MHz), GPRS data
Housing	UL 94-V0 flame retardant plastic
Dimensions	101 mm x 65 mm x 29 mm
Weight	115 g (4 oz)
Certifications	FCC; CE; RoHS; WEEE; IEC standard EN61000-4-2 Level 4 EN61000 6-3:2007+A1:2011, EN61000-6-1:2007+A1:2007 RTCA/DO-160: Section 20 – RF Susceptibility (Radiated) – Category S and Section 21 – Emissions of RF (Radiated) – Category M and H
Device Interface	STATUS and START push buttons; STATUS and ERROR LEDs



Sensitech Inc. is focused on delivering supply chain visibility solutions that track, monitor and protect products for global leaders in the food, life sciences, consumer goods, and industrial markets. Our solutions are focused in three key areas: quality and compliance, supply chain security, and logistics performance management. Quality and compliance solutions address temperature-sensitive, complex supply chains focused on delivering the highest quality possible, while our supply chain security solutions help to mitigate risks associated with theft, diversion and chain of custody. Sensitech's logistics performance solutions deliver origin-to-destination, real-time transparency to any in-transit journey. Sensitech Inc. is an ISO 9001:2008 company, headquartered in Beverly, Mass., with more than 35 sales, service and distribution locations around the world. Sensitech is a part of UTC Climate, Controls & Security, a unit of United Technologies Corp., a leading provider to the aerospace and building systems industries worldwide. Visit www.sensitech.com for additional information. © 2017 Sensitech Inc. All Rights Reserved. Unless otherwise indicated, all trademarks and service marks are the property of Sensitech Inc.