



# VizComm™ View

## VizComm™ View Sensor Suite

### Real-Time Covert Tracking for Global Supply Chain Visibility

Comprehensive real-time tracking is now available without the hassle of complex deployment. The suite of VizComm™ View trackers are efficient in performance and easy to implement. These robust trackers deliver rich visibility into every link of the supply chain. Real-time alerting enables proactive responses to cargo delays and in-transit disruptions, thereby reducing business risks and driving logistics efficiency.

Sensitech Inc. introduces a comprehensive line of VizComm View variants to solve complex problems around the globe. The single-use VizComm View trackers are battery-powered and priced right to be cost effective for tracking every shipment for security and logistics performance purposes.

Trackers are applied at distribution centers, contract manufacturing sites and 3PL locations—much like a label would be applied during the packing and staging process. The device travels with the cargo through the entire journey, with no added requirements at the shipping or receiving dock. The trackers require no capital expense, ongoing maintenance or configuration. Simply order pre-configured trackers for your shipments in the same way you order shipping labels and boxes.

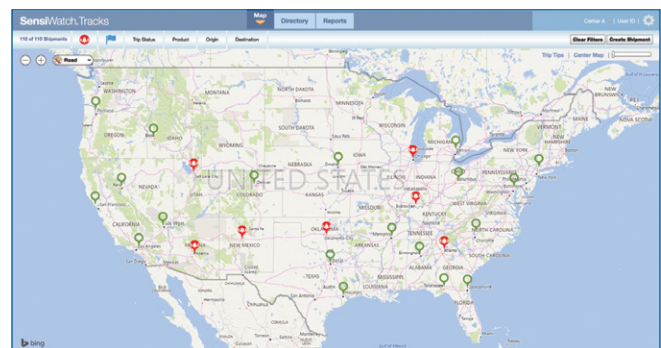
Avoid disruptions caused by careless handoffs and transfers in real-time globally.

The VizComm View family of trackers deliver comprehensive 2G and 3G cellular performance and global reach, making them ideal for cross-border solutions and for geographies where communication services may be impaired.

---

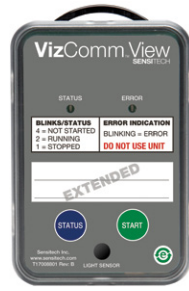
### Key Features and Benefits

- Arrives fully configured and charged, with push-button start for **easy deployment**
- **Real-time location tracking** to support both logistics and security
- Data collected can be aggregated to create reports providing **a holistic view of your supply chain**
- Global communication coverage helps to assure feedback **anywhere in the world**
- **Light sensor** for evidence of box or door opening
- **Reduced footprint** makes it easy to place and conceal
- Automated location **alerts** for reporting on demand
- No-worry returns; **recycling** encouraged and supported
- Works in conjunction with SensiWatch™ Tracks, a **secure web-based tracking** and monitoring platform

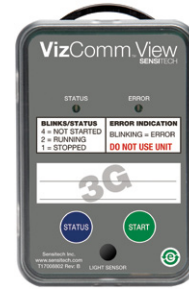




VizComm View



VizComm View Extended



VizComm View 3G

## VizComm View Sensor Suite Specifications

	VizComm View	VizComm View Extended	VizComm View 3G
<b>Sensor Types</b>	Temperature, Light		
<b>Temperature Range</b>	-20°C to +55°C (-4°F to +131°F)	-30°C to +55°C (-22°F to +131°F)	
<b>Environmental Rating</b>	IP64		
<b>Light Sensor</b>	0-400 lux		
<b>Cellular Communications</b>	2G - GSM/GPRS/EDGE Quad Band (850, 900, 1800, 1900 MHz)		3G/2G - GSM/GPRS/EDGE Quad Band (850, 900, 1800, 1900 MHz); UMTS/HSPA+ Penta Band (800, 850, 900, 1900, 2100 MHz)
<b>Battery Type</b>	High-capacity internal Lithium Metal battery		
<b>Shelf Life</b>	90 days		
<b>Housing</b>	UL 94-V0 flame retardant plastic		
<b>Dimensions</b>	101 mm x 65 mm x 29 mm		
<b>Weight</b>	115g (4oz)	133.2g (4.7oz)	138.9g (4.9oz)
<b>Certifications</b>	FCC; CE; NOM; Anatel; PTCRB; RoHS; WEEE; IEC standard EN61000-4-2 Level 4, EN61000-6-3: 2007+A1:2011; EN61000-6-1:2007+A1:2007; RTCA/DO-160: Section 20 – RF Susceptibility (Radiated) – Category S and Section 21 – Emissions of RF (Radiated) – Category M and H		
<b>Device Interface</b>	STATUS, START push buttons; STATUS, ERROR LEDs		
<b>Real-time Software Interface</b>	SensiWatch™ Tracks; SensiGuard™ Tracks; Email notifications		

Sensitech Inc. is focused on delivering supply chain visibility solutions that track, monitor and protect products for global leaders in the food, life sciences, consumer goods, and industrial markets. Our solutions are focused in three key areas: quality and compliance, supply chain security, and logistics performance management. Quality and compliance solutions address temperature-sensitive, complex supply chains focused on delivering the highest quality possible, while our supply chain security solutions help to mitigate risks associated with theft, diversion and chain of custody. Sensitech's logistics performance solutions deliver origin-to-destination, real-time transparency to any in-transit journey. Sensitech Inc. is an ISO 9001:2008 company, headquartered in Beverly, Mass., with more than 35 sales, service and distribution locations around the world. Sensitech is a part of UTC Climate, Controls & Security, a unit of United Technologies Corp., a leading provider to the aerospace and building systems industries worldwide. Visit [www.sensitech.com](http://www.sensitech.com) for additional information. © 2018 Sensitech Inc. All Rights Reserved. Unless otherwise indicated, all trademarks and service marks are the property of Sensitech Inc.