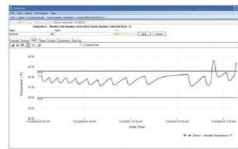


**Millions Depend on the Integrity of Your Product.
Sensitech's Mission is to Ensure that Integrity.**

The Tools That Turn Information Into Power



TempTale Manager®
Desktop Software



Data Management Services



RF Monitoring



TempTale®4 Monitor



TempTale®4 USB Monitor



TagAlert® Indicator

**TempTale®4 USB
Multi-Alarm Monitor
Instructions For Use**

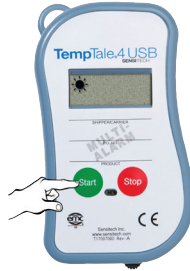
**For more information, contact our client services
group at 800-843-8367.**



All TempTale®4 USB Multi-Alarm (MA) monitors are programmed with a custom start-up delay, measurement interval and time-temperature alarm settings that have been pre-determined by the customer.

Starting a TempTale®4 USB MA Monitor

- Press the Start button (1 – 3 seconds) until the “Sunshine” icon ☀ appears in the upper left corner of the display.
- The TempTale4 USB MA will now begin to record data after the pre-programmed start-up delay period has passed.



To Mark an Important Event (“Date Stamp”)

- The TempTale4 USB MA monitors provide an option to “Date Stamp” or mark an important event at any time during the recording cycle. This mark is displayed as an arrow when viewing the Graph and shown in **bold italics** when viewing the Tabular data.
- To set a marked data point while the monitor is recording, press and release the “Start” button. The “Arrow” ↑ icon will appear temporarily in the lower left corner and the trip summary data will appear on the display.
- Press and release the Start button to step through the trip summary data. Data appears as follows:

1. Time remaining/time elapsed before alarm triggers (configurable option)
2. Average temperature
3. Highest temperature recorded
4. Lowest temperature recorded
5. Alarm number(s) that triggered (configurable option)
6. Current Temp Reading (Last Temp Recorded configurable option)

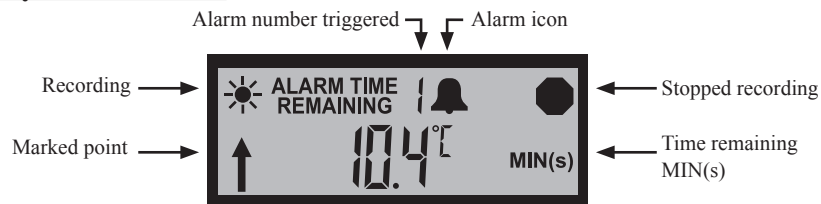
Alarming

When the TempTale4 USB MA is exposed to temperatures that meet or exceed the allowable pre-programmed time threshold, an “Alarm bell” 🔔 or “X” (depending on which Alarm display option is configured) will appear at the top of the LCD window.

Stopping a TempTale4USB Monitor

Press and hold (1 to 3 seconds) the Stop button until the “Stop” ● icon appears in the upper right corner of the display. Inserting the USB plug into a USB port on the computer will also stop the monitor.

Displayed Information



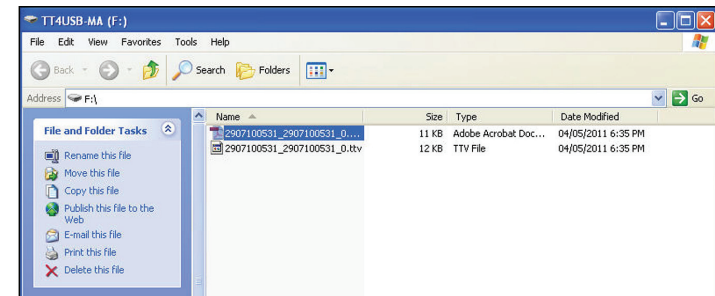
Receiving a TempTale4 USB MA Monitor

- Recover the TempTale4 USB MA monitor and press the red Stop button (1 – 3 seconds) to manually stop the unit. NOTE: If the monitor is not stopped manually, the TempTale4 USB MA will continue to record data until the monitor is plugged into a USB port on the computer or until the pre-programmed trip length is exceeded.
- Verify the “Stop” icon ● is visible on the display.

Retrieving TempTale4 USB MA Monitor Reports and Data Files

- Pull out the USB connector cable from the side of the TempTale4 USB MA monitor and insert the plug into a USB port on the computer. The monitor will automatically begin creating the Adobe® PDF report and Sensitech .TTV data file within the monitor.
- After the LED on the face of the monitor glows solid green, the monitor has completed the report and data file generation. The files are now accessible as files on a “removable storage device” as shown below.

Note: Do not remove the plug from the USB port on the computer until the LED on the face of the monitor glows solid green.



Managing and Viewing TempTale4 USB Monitor Files

- If the computer has Adobe PDF compatible reader software installed, the PDF report file containing the monitor information, summary statistics, and time-temperature data graph, can be opened and viewed by double clicking on the .PDF file icon.
- If the computer has Sensitech’s TempTale Manager® Desktop Software installed, the .TTV data file containing the monitor information and time-temperature data, can be opened and accessed by double clicking on the .TTV file icon.
- Both the PDF and .TTV files can be moved, copied, saved and/or attached to email as allowed by the computer operating system.