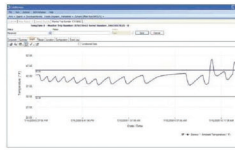


**Millions Depend on the Integrity of Your Product.
Sensitech's Mission is to Ensure that Integrity.**

The Tools That Turn Data Into Information



TempTale Manager®
Desktop Software



Data Management Services



TempTale® RF



TempTale®4 Monitor



TagAlert® Indicator

TempTale® GEO
**Placement Instructions/
Instrucciones de colocación**

**For more information, contact our client services group
at 800-843-8367.**






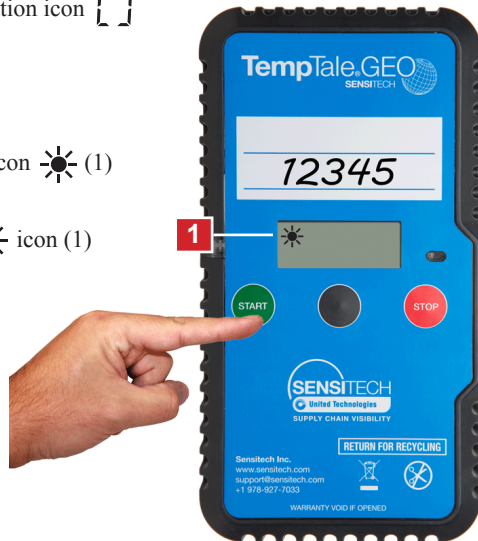
Fill Out the TempTale® GEO Label

- Write the PO/Order Number on the TempTale GEO label.



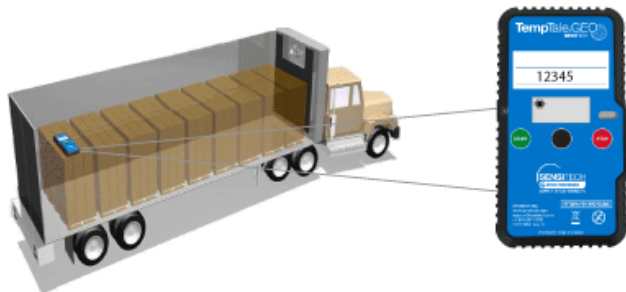
Start the TempTale GEO

- Press and **hold** the **green** Start button for several seconds until the spinning initialization icon  is visible on the LCD display.
- A **green** LED will blink rapidly for **30-60 seconds**.
- **Place on Shipment** when the sun icon  (1) is visible on the LCD display,
- **Do Not Use Monitor** if the sun  icon (1) is **not** visible.



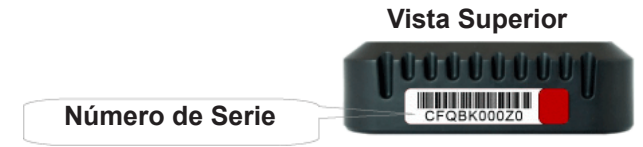
Place the TempTale GEO

- Remove the protective paper from the Velcro strips on the back of the TempTale GEO. Place it on the last pallet, loaded on top of the pallet on the passenger side of the trailer.

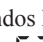




Información de Envío TempTale® GEO

- Escribe el número de PO/Número de Orden en el TempTale GEO.



Iniciar TempTale GEO

- Pulse y **mantenga** el botón **verde** para comenzar por varios segundos hasta que el icono de giro de inicialización  es visible en la pantalla LCD.
- El LED **verde** parpadeará rápidamente durante **30 a 60 segundos**.
- **Poner en el Envío** cuando el icono del sol  (1) se hace visible en la pantalla LCD.
- **No Usar el Monitor** si el icono del sol  (1) **no** es visible.



Coloque el TempTale GEO

- Retire el papel protector de las tiras de velcro en la parte posterior del TempTale Geo. Colóquelo encima de la última paleta cargada del lado del pasajero en el camión.

